



Gladstone Ports Corporation

*Growth, Prosperity, Community.*

Transport Infrastructure Act 1994

Gladstone Ports Corporation

### Port Notice 8/17

## Safety Exclusion Zones at LNG Facilities – Port of Gladstone

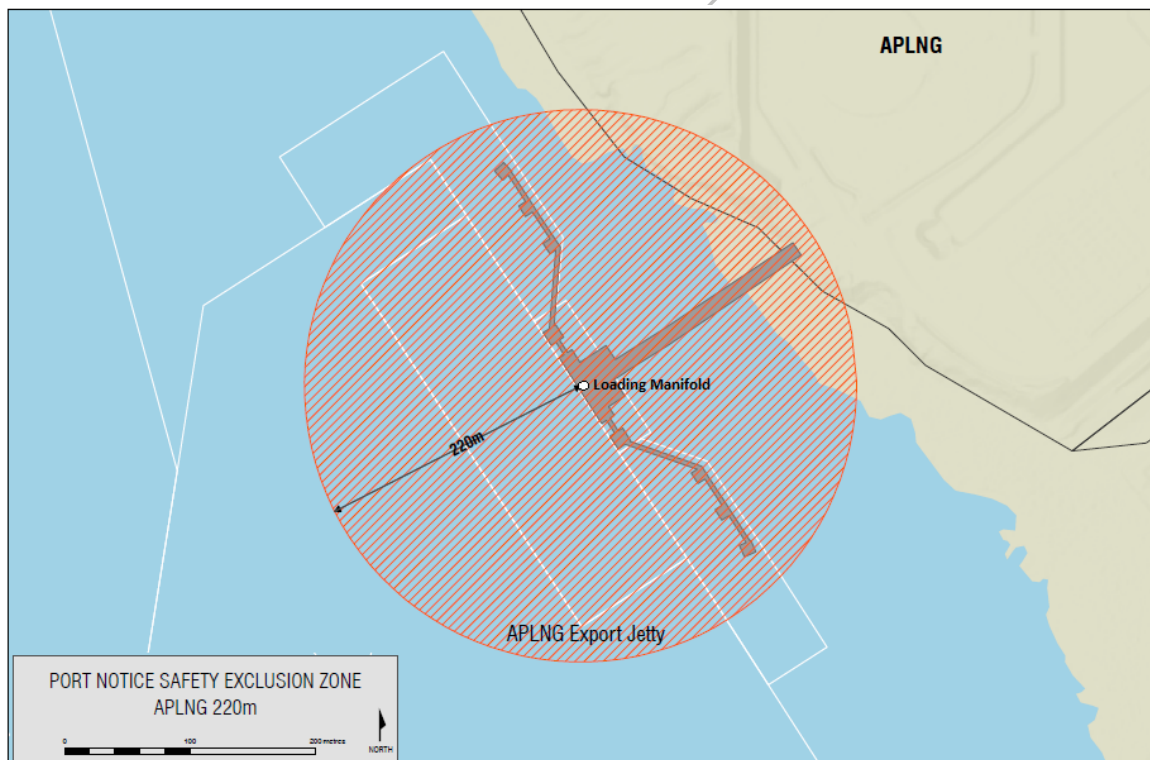
Take notice that safety exclusion zones exist at LNG facilities in the Port of Gladstone whenever an LNG ship is berthed at the facility.

Persons and vessels must not enter, stop or anchor within 220 metres of the Australia Pacific LNG (APLNG) and Queensland Curtis LNG (QCLNG) loading manifold (as depicted below) unless authorised to do so by Gladstone Ports Corporation Ltd or the LNG facility.

Persons and vessels must not enter, stop or anchor within 180 metres of the Gladstone LNG (GLNG) Loading Manifold (as depicted below) unless authorised to do so by Gladstone Ports Corporation Ltd or the LNG facility.

Failure to comply with this port notice is an offence against Section 282J of the Transport Infrastructure Act 1994 (Qld). **Maximum Penalty – 100 Penalty Units.**

### Safety Exclusion Zone – Australia Pacific LNG (APLNG) – 220m

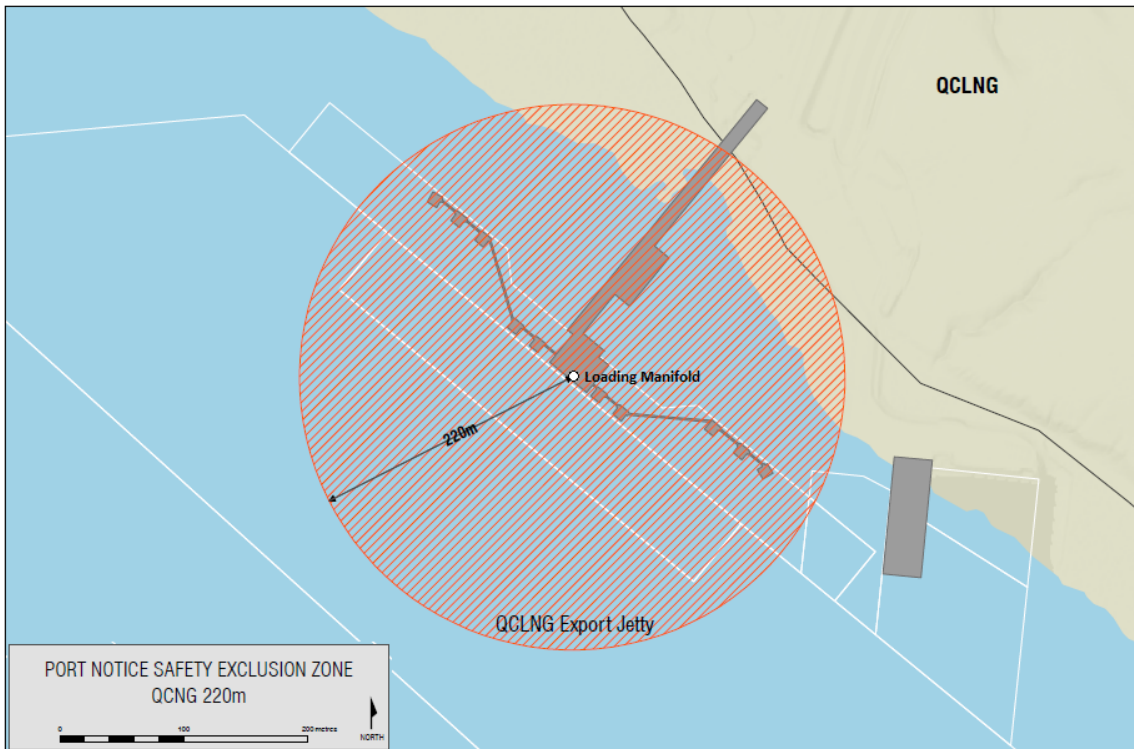




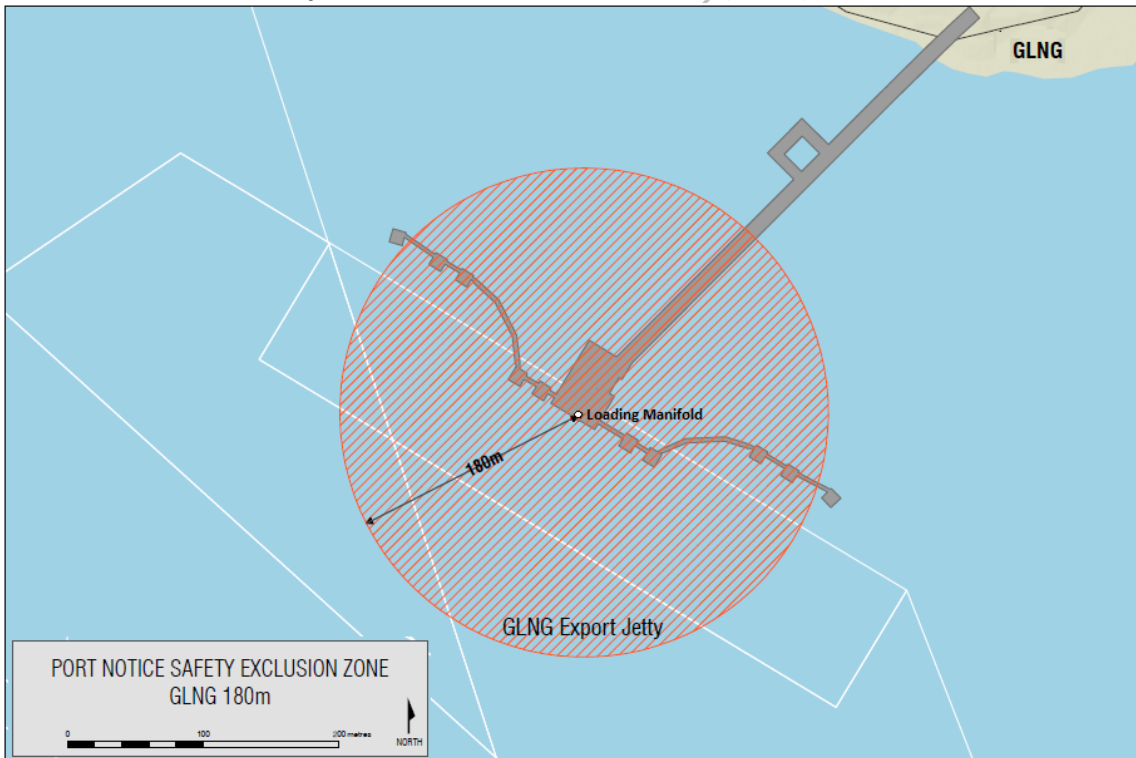
Gladstone Ports Corporation

Growth, Prosperity, Community.

### Safety Exclusion Zone – Queensland Curtis LNG (QCLNG) – 220m



### Safety Exclusion Zone – Gladstone LNG (GLNG) – 180m



These Gladstone Ports Corporation – Safety Exclusion Zones at LNG Facilities are also subject to the Gladstone Port Procedures and powers of the Regional Harbour Master under the *Transport Operations (Marine Safety) Act 1994*.

Peter O'Sullivan  
Chief Executive Officer

23 February 2017